

ALL WOOD ROOF TRUSSES ABOVE AS NECC
 DEFERRED ACCUSTICAL CEILING SYSTEM

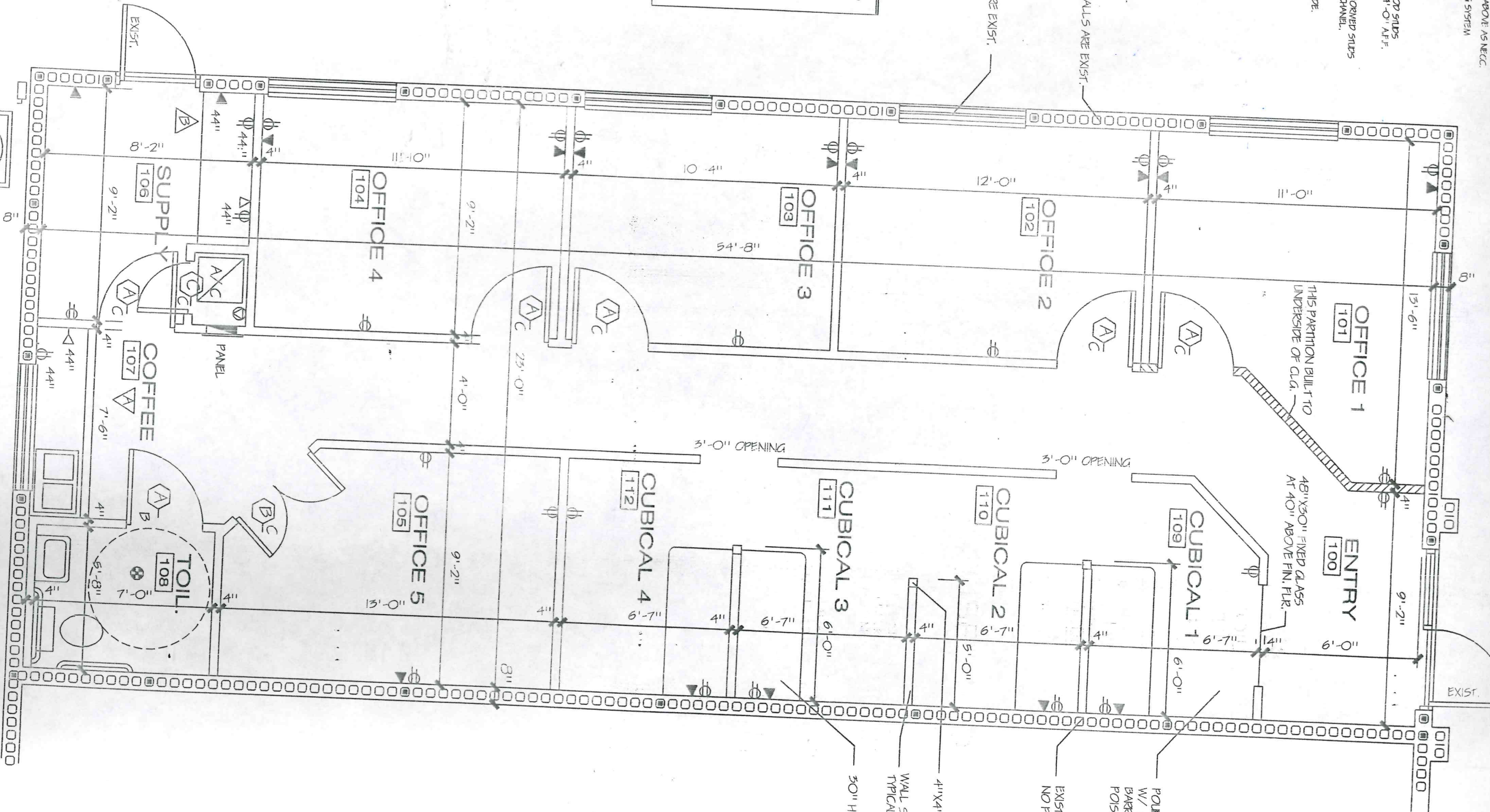
CABLE TOP PLATE
 PARTITION W/ 2" x 4" WOOD STUDS
 16" O.C. W/ NIT. BLOKING @ 4'-0" A.F.F.
 OPTIONAL: 24 GA METAL PERFORMED STUDS
 16" O.C. IN METAL BAY & TOP CHANEL.
 2" GYP/WALL BOARD EA. SIDE.
 ANCHORED 2" x 4" BASE PLATE
 NC 5A/B

N-BEARING

ALL EXTERIOR WALLS ARE EXIST.

ALL WINDOWS ARE EXIST.

ALL PARTITIONS CONFORM TO
 IN STRICT APPEARANCE
 LIFE SAFETY CODE.
 5 @ MAX 1:12 SLOPE.
 CH DEAD BOLT.
 1" OR 1 1/2" RATING
 OR 1 1/2"
 AND MUST



HARDW

ALL LOCKSETS LEVER KNOB, 1 2-3/4" BACK

A	KEYED EI
B	PRIVACY
C	PASSAGE
D	PASSAGE SINGLE C

1" A" LOCKS KEY & DEADBOLT 15 K

DOOR SC

A	3068 IN STND PR. HING
B	DOUBLE WOOD FRAME V
C	2068 S IN STND. PR. HING

H.C. CONT

HANDICAPPED FEAT GRAB RAIL & FIXTR RE-QUIREMENTS OF BUILDING CONSTRUC

PROPOSED FLOOR & ELECT. PL

ELECT. METER IS EXIST. ON OPP. SIDE OF BUILDING W/ COND. ROLIGHT TO THIS SPACE. CONTINUE EXIST. COND. TO NEW PANEL LOCATION.